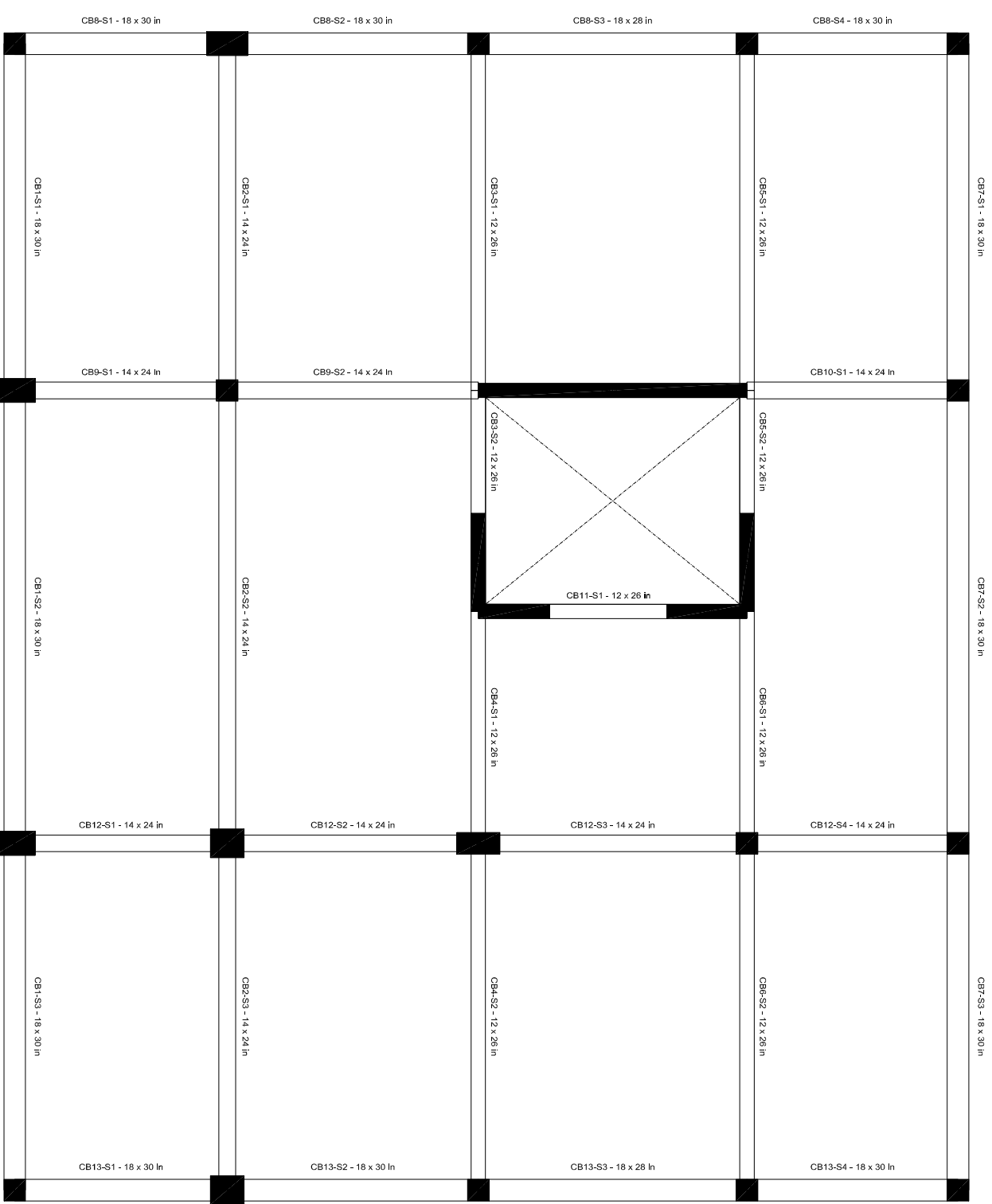


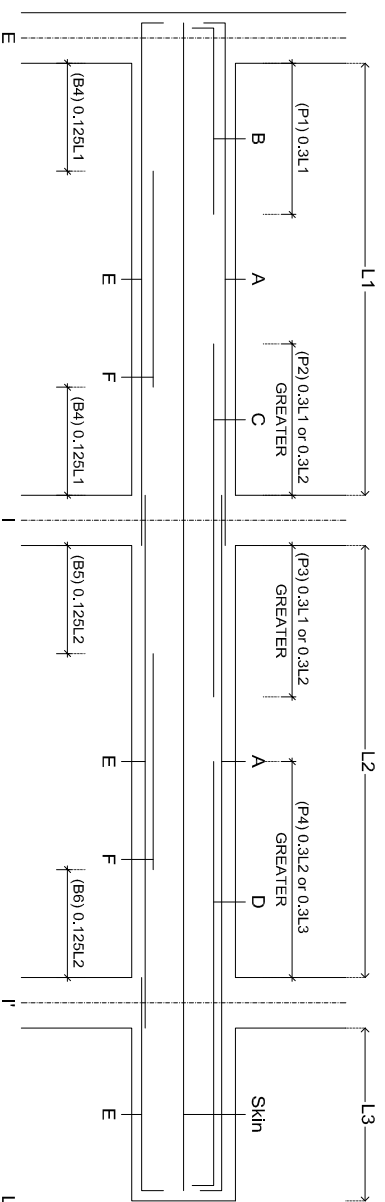
CONCRETE BEAM REBAR TABLE (STORY 13)

BEAM ID	SECTION SIZE	LONGITUDINAL BARS						STIRRUPS	
		A	B	C	E	Skin	F	Ties	Legs
CB1-S1	18 in	30 in	3#6	2#8	5#5	2#3		#3@10 in	3
CB1-S2	18 in	30 in	3#6	4#6	3#7	2#3	2#6	#3@10 in	3
CB1-S3	18 in	30 in	3#6	2#6	5#5	2#3	2#5	#3@10 in	3
CB2-S1	14 in	24 in	3#6	2#8	(2+1)#9	7#4	1#3	(0+7)#3	3
CB2-S2	14 in	24 in	3#6		(2+4)#7	5#6	1#3	(0+4)#6	3
CB2-S3	14 in	24 in	3#6	2#8	7#4	1#3	(0+7)#3	#3@7 in	3
CB3-S1	12 in	26 in	4#6		(1+5)#6	2#9	1#3	#3@4 in	2
CB3-S2	12 in	26 in	5#5		5#3	1#3		#3@7 in	2
CB4-S1	12 in	26 in	3#9	(0+2)#9	(0+4)#6	5#5	1#3	#3@5 in	2
CB4-S2	12 in	26 in	5#4		3#7	1#3	(0+2)#5	#3@7 in	2
CB5-S1	12 in	26 in	2#9		(1+2)#9	5#6	1#3	(0+3)#3	2
CB5-S2	12 in	26 in	2#6		2#3			#3@12 in	2
CB6-S1	12 in	26 in	3#9	(0+2)#9	(0+4)#6	2#7	1#3	#3@7 in	2
CB6-S2	12 in	26 in	5#4	(0+2)#4	2#9	1#3	1#6	#3@6 in	2
CB7-S1	18 in	30 in	5#5		2#8	7#5	2#3	#3@8 in	3
CB7-S2	18 in	30 in	5#5		2#8	7#5	2#3	#3@7 in	3
CB7-S3	18 in	30 in	3#6		7#5	2#3	2#5	#3@10 in	3
CB8-S1	18 in	30 in	3#5		3#5			#3@12 in	3
CB8-S2	18 in	30 in	9#5		3#6	2#3		#3@10 in	3
CB8-S3	18 in	28 in	3#7		9#5	2#3		#3@9 in	3
CB8-S4	18 in	30 in	3#6		3#6			#3@12 in	3
CB9-S1	14 in	24 in	7#4	(0+2)#4	5#5	1#3		#3@7 in	3
CB9-S2	14 in	24 in	5#8	(0+2)#8	5#6	1#3		#3@6 in	3
CB10-S1	14 in	24 in	5#8		5#6	1#3		#3@7 in	3
CB11-S1	12 in	26 in	2#6		4#4	1#3		#3@7 in	2
CB12-S1	14 in	24 in	3#6		5#3			#3@11 in	3
CB12-S2	14 in	24 in	3#7		2#7	5#5	1#3	#3@7 in	3
CB12-S3	14 in	24 in	7#4		2#6	3#6	1#3	2#4	3
CB12-S4	14 in	24 in	3#6		3#6	1#3		#3@7 in	3
CB13-S1	18 in	30 in	3#6		2#6	3#5		#3@12 in	3
CB13-S2	18 in	30 in	3#10		3#7	2#3		#3@10 in	3
CB13-S3	18 in	28 in	3#7		9#5	2#3		#3@9 in	3
CB13-S4	18 in	30 in	3#8	2#8	9#5	2#3		#3@10 in	3

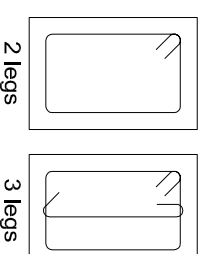
STORY 13



Typical concrete beam detail



Stirrup types



Concrete Beam Schedule (Example drawing)

StruBIM Design

www.cype.com