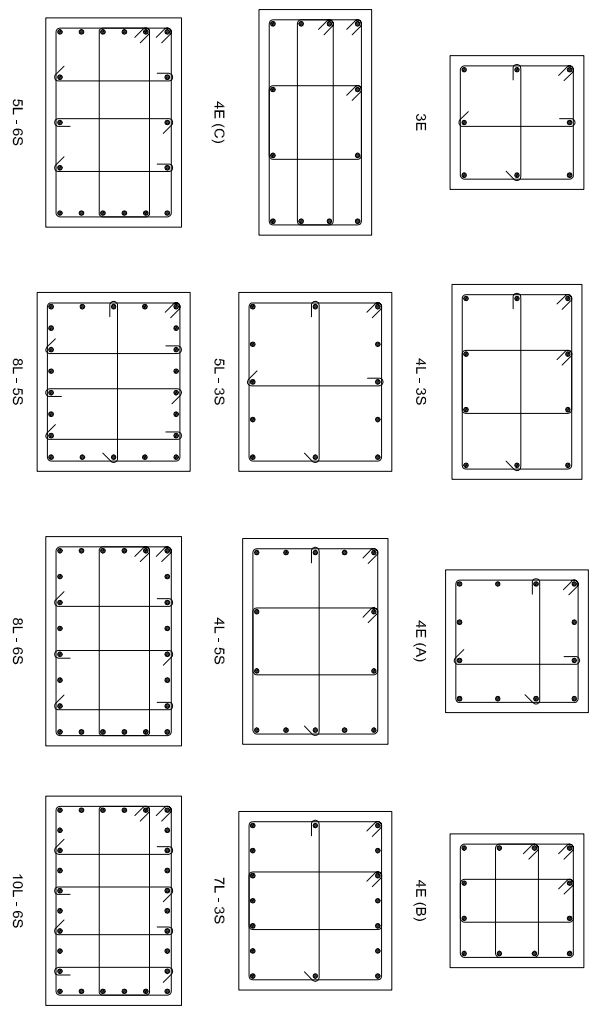


COLUMNS	C33, C36, C75, C78	C34, C35	C43	C44	C45	C46	C61, C64	C63	C77, C87, C88	C86	C89
LEVEL											
STORY 14											
STORY 13											
STORY 12				18 x 18 in 12#7 #3@7 in 4E (B)		24 x 28 in 12#7 #3@10 in 5L - 3S	18 x 18 in 12#8 #3@7 in 4E (B)	36 x 18 in 12#7 #3@7 in 4E (C)	18 x 18 in 8#7 #3@7 in 3E	18 x 18 in 8#7 #3@7 in 3E	
STORY 11	18 x 18 in 8#7 #3@7 in 3E										
STORY 10		34 x 20 in 12#7 #3@12 in 4E (C)				24 x 28 in 12#7 #3@12 in 5L - 3S	18 x 18 in 8#7 #3@7 in 3E				18 x 18 in 8#7 #3@7 in 3E
STORY 9				18 x 18 in 8#7 #3@12 in 3E							
STORY 8							18 x 18 in 12#7 #3@7 in 4E (B)		18 x 18 in 8#7 #3@12 in 3E	18 x 18 in 8#7 #3@12 in 3E	
STORY 7	18 x 18 in 8#7 #3@12 in 3E						18 x 18 in 12#7 #3@12 in 4E (B)				18 x 18 in 8#7 #3@12 in 3E
STORY 6			34 x 20 in 12#7 #3@12 in 4E (C)					36 x 18 in 12#7 #3@12 in 4E (C)			
STORY 5		34 x 22 in 10#8 #3@12 in 4L - 3S									
STORY 4	18 x 18 in 12#7 #3@12 in 4E (B)										
STORY 3	18 x 18 in 12#8 #3@12 in 4E (B)			24 x 28 in 12#7 #3@12 in 5L - 3S		34 x 20 in 12#7 #3@12 in 4E (C)	34 x 24 in 14#7 #3@12 in 4L - 5S		34 x 20 in 12#7 #3@12 in 4E (C)	30 x 20 in 10#7 #3@12 in 4L - 3S	34 x 22 in 10#8 #3@12 in 4L - 3S
STORY 2	20 x 20 in 8#8 #3@12 in 3E	34 x 22 in 18#7 #3@12 in 5L - 6S									
STORY 1	20 x 20 in 12#9 #3@12 in 4E (B)	34 x 22 in 12#9 #3@12 in 10L - 6S									
BASE	20 x 20 in 12#9 #4@12 in 4E (A)	34 x 22 in 24#9 #3@12 in 8L - 6S		24 x 28 in 16#9 #3@12 in 7L - 3S		24 x 28 in 22#8 #3@12 in 8L - 5S					

Typical column details



Column Schedule (Example drawing)

StruBIM Design