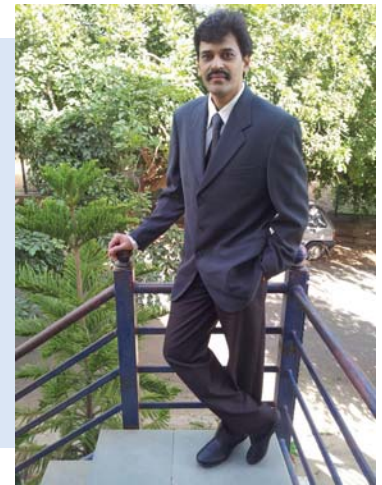


# CYPE Software Solutions: All Set to Meet Industry Needs

CYPE, a firm with more than 25 years of experience in Architecture, Engineering and Construction offers efficient and reliable software, adapted to the needs of industry professionals.

Throughout all these years, CYPE has compounded an intense activity in the field of engineering and the design of structures with the aid of forefront research in information technology. As a result of this work, CYPE presently occupies a leading position within the area of software applied to Engineering, Architecture and Construction.

**- Mr. Amarnath S.N., Proprietor, FE Designs  
Distributor for CYPE in India**



## CYPECAD

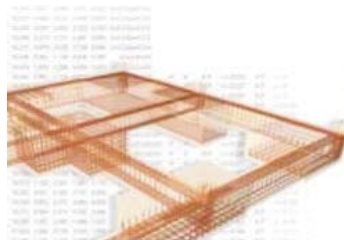
*Reliable structures, very precise drawings*

Program that carries out the analysis and design of reinforced concrete and steel structures, subject to horizontal and vertical loads, for homes, buildings and civil work projects. Its use guarantees maximum analysis reliability and optimum drawing design.

The geometry of the structure can be introduced automatically. The user can personalise the design



and edit the elements that have been introduced, with the onscreen support provided: numerous help options and error and warning texts. CYPECAD Provides very complete and precise

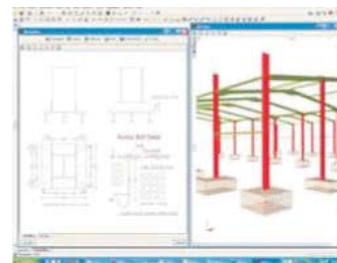


construction drawings of the structure. CYPECAD is adapted to the latest national and international construction codes.

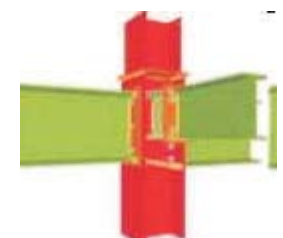
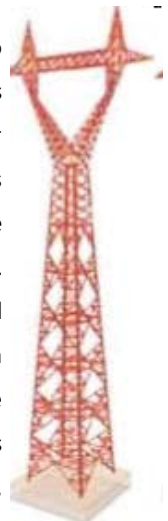
## Metal 3D

It is an agile and efficient program brought about to carry out the design of three dimensional structures composed of steel and timber bars, and their foundations, which includes pad footings, pile caps and strap and tie beams. Additionally, these can be redesigned and so obtain their maximum optimisation.

It has been adapted to national and international steel, timber, aluminium and concrete construction

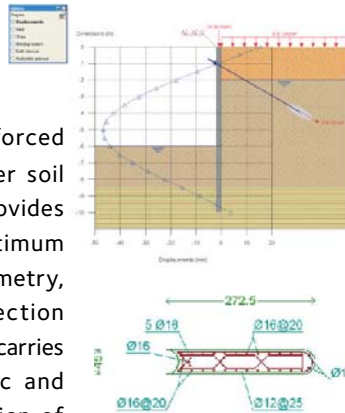


codes. The program carries out the analysis, design and check of the fire resistance of timber sections. Performs a seismic analysis of the structure (Modal Spectral Analysis) according to national and international codes. Second order effects (P-delta) are considered with wind and seismic loads.



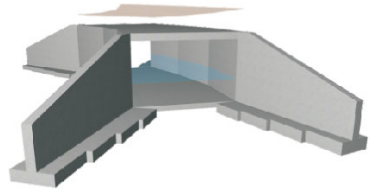
### Soil Retention Elements

Reinforced concrete cantilever walls. Program designed for the design and check of reinforced concrete cantilever soil retaining walls. Provides the automatic optimum design of the geometry, calculates the section reinforcement and carries out the geometric and reinforcement design of the foundation.



### Box Culverts

Box Culverts is a program developed for the design and analysis of reinforced concrete box culverts used for underpasses, subways, and drainage works. They can be rectangular, trapezoidal or any type of polygon designed on screen, as well as being single cell or multiple cell elements.



The program can also design culverts made various aligned prestressed elements by defining the joints or those to be executed on site.

### Arquimedes

*The versatile program for Project Management*

The most complete tool for Project Management: bills of quantities, project certifications and specifications. Automatic quantity imports and certifications using DXF and DWG templates. Gantt charts and data export to Excel.

For further details, contact:  
Mr. Amarnath, S.N.  
Tel: (+91) 99 8011 3311, 973172 0254  
E-mail: [info@cype.co.in](mailto:info@cype.co.in)  
Website: [www.cype.com](http://www.cype.com)

### Embedded Retaining Walls

This has been developed for the design and check of generic embedded retaining walls composed of any material: reinforced concrete, reinforced concrete secant pile walls, mini pile screen and steel sheet piles. The program designs the reinforcement in the case of reinforced concrete walls. An assistant is available to help introduce the data for the most common cases of several basement levels in buildings. A simple assistant is also available for buildings with one or two basement levels.

<b>Concrete Mixers</b>  One/Two/Three Bags av	<b>Pneumatic Guniting Cum Shootcreting</b> 	<b>GRAB BUCKETS</b> 	<b>Scale Weigh Batcher</b> 
<b>Builders Hoist</b> 	<b>Vibrating Plate Compactor</b> 	<b>OTHER PRODUCTS</b> ● PILING, ERECTION & HAULAGE WINCHES & ACCESSORIES ● CONCRETE PLACERS ● GROUTING MACHINES ● SHUTTERING & SCAFFOLDING ● DOUBLE & TRIPLE DRUM WINCHES ● CONCRETE BUCKETS ● BUILDING HOISTS ● CONCRETE SAW/POWER TROWEL ● MIXERS & PILING WINCHES AVAILABLE IN VARIOUS CAPACITIES.	
<b>Testing Machine</b> 	<b>Piling Winches</b> 	<b>Vacuum Dewatering System</b> 	

**ASHOK ENGINEERING & CONSTRUCTION CO.**  
 14, Ganesh Chandra Avenue, Kolkata - 700013.  
 Phone No.: 22367893 22372030, 22364081  
 Mobile No.: 9830036520  
 Fax : 033-2225-8063 • Email: [info@ashokengg.com](mailto:info@ashokengg.com)  
 Website: [www.ashokengineering.in](http://www.ashokengineering.in)